

**Schweizer**

# The smart solution for the green roof

The photovoltaic mounting system MSP-FR-G



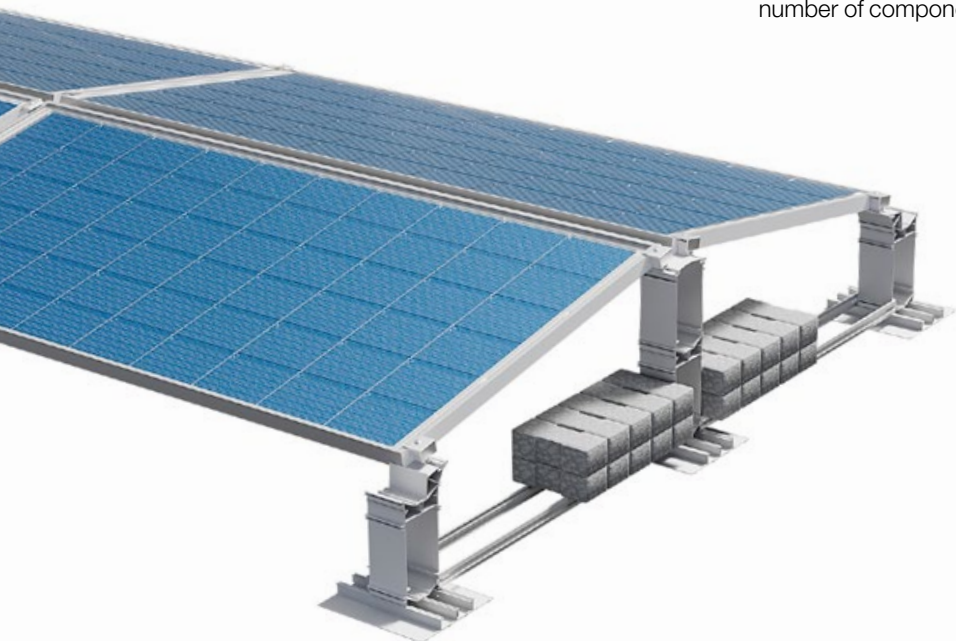
# MSP-FR-G – the optimal basis for green roof photovoltaics

With MSP-FR-G, green roof photovoltaics can easily be implemented. Thanks to the small number of components, the possibility of extensive pre-assembly and the sophisticated click system, installation on existing green roofs is extremely efficient.

MSP-FR-G was specially designed for green roofs and is characterised by its low intrinsic weight as well as by the highest standard of material quality and durability. The system can be flexibly used on green roofs that have 'grown'. It is installed without roof penetration and permits maximum flexibility in alignment and arrangement.

## Advantages at a glance

- Simple mounting based on modular structure
- Optimised ballasting
- System assembly possible without modules
- No roof penetration
- Simple and speedy handling due to small number of components



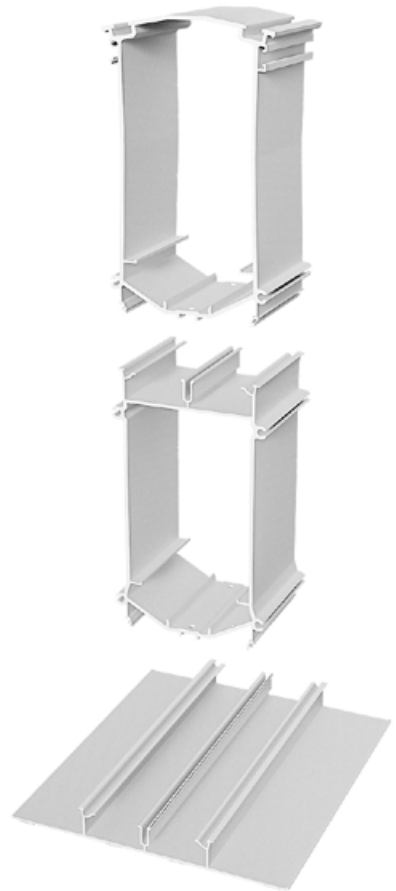
# The sustainable system for retrofitting

MSP-FR-G is the practical solution that combines two major ecological trends: PV mounting systems for flat roofs and green roofs.

The MSP-FR-G mounting system is based on the consistent further development of our tried and tested flat roof system. Only one additional adapter support is required to use MSP-FR-G on existing green roofs. The high and deep supports stand firmly on the rooted green roof substrate. At the lowest point the distance from the roof is around 30 cm.

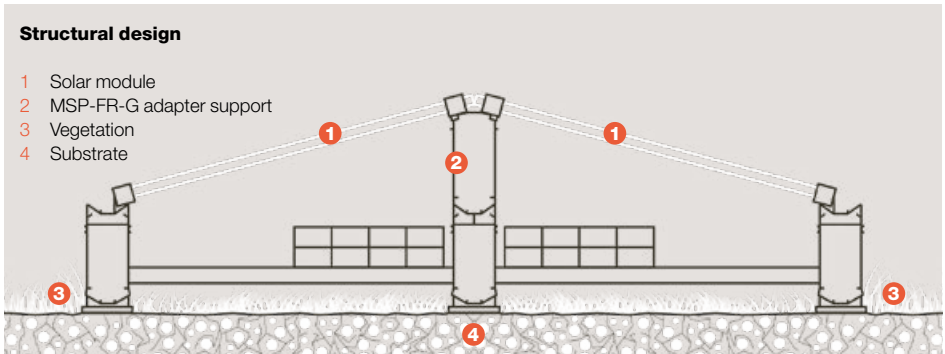
## The advantages

- Easy to retrofit on existing green roofs
- Installed directly on rooted green roof substrates without preparatory work
- An efficient solution, based on the proven MSP photovoltaic mounting system



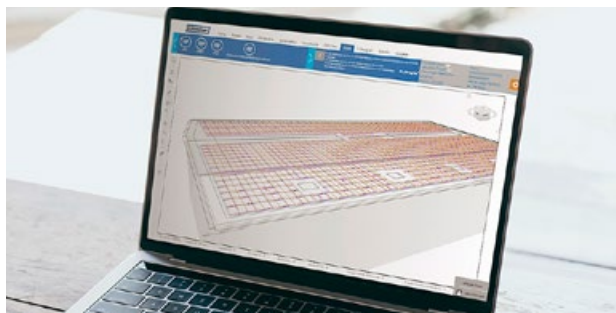
## Structural design

- 1 Solar module
- 2 MSP-FR-G adapter support
- 3 Vegetation
- 4 Substrate



# Planning made easy with the Solar.Pro.Tool

With the web-based Solar.Pro.Tool software from Schweizer, PV systems can be planned quickly and easily for all Schweizer mounting systems.



The tool can be operated intuitively and from any location. The project data are accessible online and are saved after processing. This allows efficient and at the same time detailed and flexible planning for any roof. The documentation includes all important technical details such as the PV generator design, parts lists, plans and the instructions for quick and secure installation. For larger installations, entire project teams can be given online access.

## Advantages of the Solar.Pro.Tool

- System design, statics, electrics (Polysun) in a single environment
- Rapid project design with parts lists and prices
- Plans can be scaled to suit
- Wide variety of import options
- Building geometries from Google, PDF or DXF
- Customised dimensioning of individual roof objects
- Shading simulation
- Modules and roof elements can be arranged by drag-and-drop
- Each MSP article has its own CO<sub>2</sub> equivalent (CO<sub>2</sub>e)
- Web-based and therefore location-independent application
- Simple digital transfer of project data
- Easy access to projects for planning teams
- Support from Schweizer in customer projects