

LONGi EcoLife

LR7-54HVB(Single Glass)

465~470M

First Choice For High-End Residential

► **Extreme Efficiency**

► **High Power Generation**

Leading HPBC2.0 technology, more power generation under the same area

► **Safety Function**

Anti-Shading and Prevent Localized Overheating

► **Low Carbon and Environmentally Friendly**

Low carbon for the whole lifecycle process, more environmentally friendly

► **Pure Black Appearance**

No gridlines, low glare

► **Higher Hail Resistance**

3.2mm tempered glass on the front

**Complete System and
Product Certifications**

IEC61215, IEC 61730

ISO9001: Quality Management System

ISO14001: Environment Management System

ISO45001: Occupational Health and Safety Management System

IEC62941: Quality System for PV Module Manufacturing

30

30-Year Warranty for
Materials and Processing

30

30-Year Warranty for Extra
Linear Power Output



Residential PV Modules, Choose BC

LR7-54HVB 465~470M

23.0%
MAX MODULE
EFFICIENCY

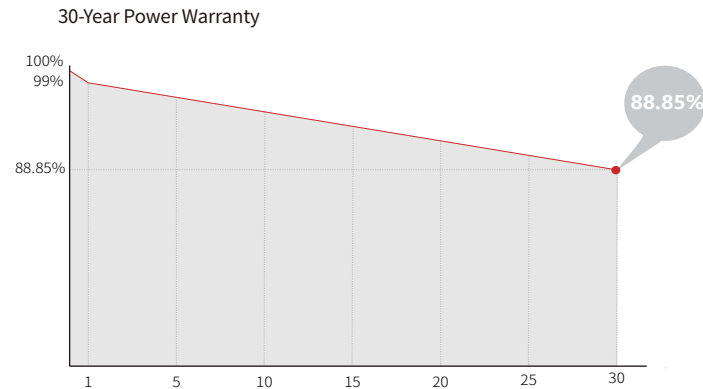
0~3%
POWER
TOLERANCE

<1%
FIRST YEAR
POWER DEGRADATION

0.35%
YEAR 2-30
POWER DEGRADATION

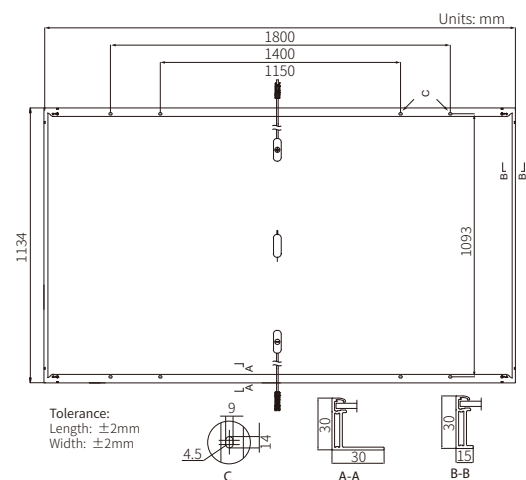
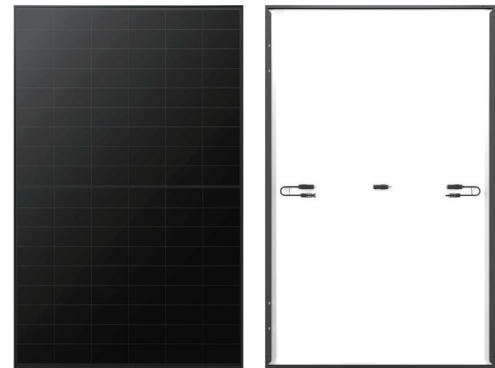
BC-CELL
LOWER OPERATING
TEMPERATURE

Additional Value



Mechanical Parameters

Cell Orientation	108 (6×18)
Junction Box	IP68
Output Cable	4mm ² , +400, -200mm/±1200mm length can be customized
Glass	Single glass, 3.2mm coated tempered glass
Frame	Black anodized aluminum alloy frame
Weight	21.6kg
Dimension	1800×1134×30mm
Packaging	36pcs per pallet / 216pcs per 20' GP / 864pcs per 40' HC



Electrical Characteristics

STC: AM1.5 1000W/m² 25°C

NOCT: AM1.5 800W/m² 20°C 1m/s

Test uncertainty for P_{max}: ±3%

Module Type	LR7-54HVB-465M		LR7-54HVB-470M	
	STC	NOCT	STC	NOCT
Testing Condition				
Maximum Power (P _{max} /W)	465	354	470	358
Open Circuit Voltage (V _{oc} /V)	39.96	37.97	40.07	38.08
Short Circuit Current (I _{sc} /A)	14.83	11.92	14.93	12.00
Voltage at Maximum Power (V _{mp} /V)	32.93	31.30	33.05	31.41
Current at Maximum Power (I _{mp} /A)	14.13	11.33	14.23	11.41
Module Efficiency(%)	22.8		23.0	

Operating Parameters

Operational Temperature	-40°C ~ +85°C
Power Output Tolerance	0 ~ 3%
Maximum System Voltage	DC1500V (IEC)
Maximum Series Fuse Rating	25A
Nominal Operating Cell Temperature	45±2°C
Protection Class	Class II
Fire Rating	IEC Class C

Mechanical Loading

Front Side Maximum Static Loading	5400Pa
Rear Side Maximum Static Loading	2400Pa
Hailstone Test	25mm Hailstone at the speed of 23m/s

Temperature Ratings (STC)

Temperature Coefficient of I _{sc}	+0.050%/°C
Temperature Coefficient of V _{oc}	-0.200%/°C
Temperature Coefficient of P _{max}	-0.260%/°C

LONGI

Specifications included in this datasheet are subject to change without notice.
LONGI reserves the right of final interpretation. (BGV02 20250604)